

Sea Link

Volume 6: Environmental Statement

Document 6.4.2.1

Part 2 Suffolk

Chapter 1

Landscape and Visual - Figures Part 7 of 7

Planning Inspectorate Reference: EN020026

Version: A

March 2025

Infrastructure Planning (Applications: Prescribed Forms and Procedure)
Regulations 2009 Regulation 5(2)(a)

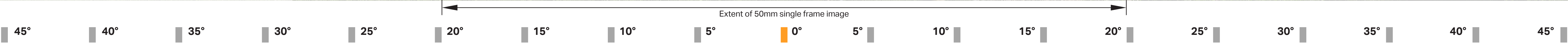
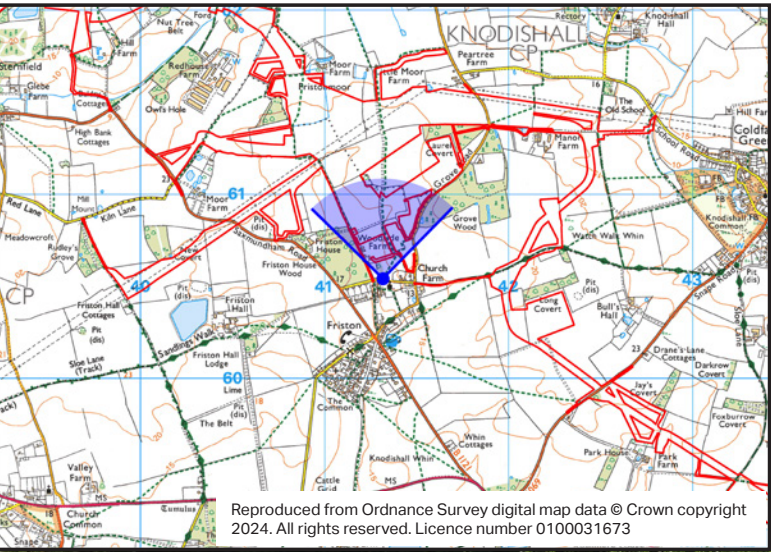
Contents

Application Document 6.4.2.1 Landscape and Visual - Figures Part 7 of 7

- Application Document 6.4.2.1.10 Representative Viewpoint Visualisations
- Application Document 6.4.2.1.11 Cumulative Schemes (Major Projects) Screened Zone of Theoretical Visibility
- Application Document 6.4.2.1.12 Landscape Context and Designations and Landscape Character - District with Scoped-in Cumulative Schemes
- Application Document 6.4.2.1.13 Representative Viewpoint Locations and Screened Zone of Theoretical Visibility - Sea Link and Friston Scenario 1 With Scoped In Cumulative Schemes



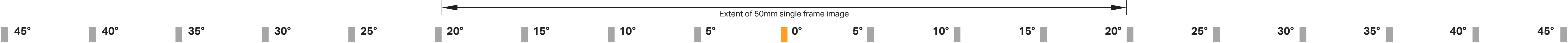
Note: Images to be viewed at a comfortable arm's length.

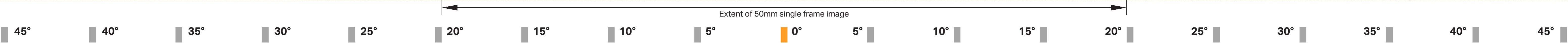


AECOM Delivering a better world	Visualisation Type:	3	Camera:	Canon EOS 5D MkIV	Eye level:	14.5m	Note: The block photomontage shows the maximum parameters for the NGET Friston substation. The block photomontage shows two new pylons and the removal of one pylon under Friston Scenario 2. No visualisation has been prepared for Friston Scenario 1 as no new infrastructure would be present.
	Projection:	Cylindrical	Lens:	Sigma 50mm f/1.4 DG HSM	Height of Camera:	1.6m	
	Enlargement Factor:	96%	Horizontal Field of View:	90°			
	Paper Size:	A1	Direction of View:	North			
	Date / Time:	07/04/2024, 07:50	Location:	E641315 N260539			
Sea Link Suffolk Onshore Scheme							
Viewpoint 23: Church Road, Friston, looking north							
Application Document 6.4.2.1.10-Z Representative Viewpoint Visualisations (sheet 2 of 4)							



BASELINE (SUMMER)

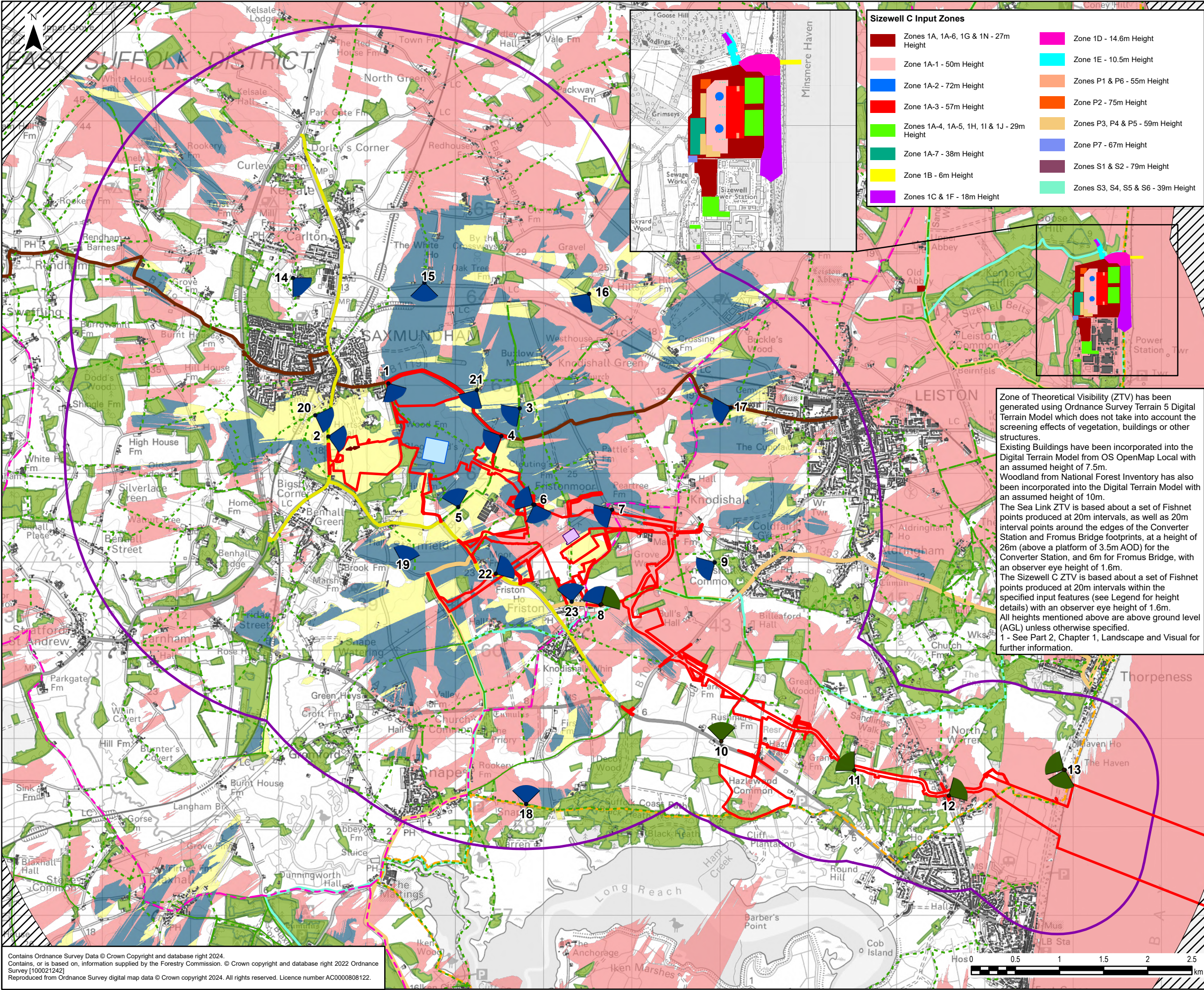




AECOM Delivering a better world	Visualisation Type:	3	Camera:	Canon EOS 5D MkIV	Eye level:	14.5m	Note: The block photomontage shows the maximum parameters for the NGET Friston substation. The block photomontage shows two new pylons and the removal of one pylon under Friston Scenario 2. No visualisation has been prepared for Friston Scenario 1 as no new infrastructure would be present.
	Projection:	Cylindrical	Lens:	Sigma 50mm f/1.4 DG HSM	Height of Camera:	1.6m	
	Enlargement Factor:	96%	Horizontal Field of View:	90°			
	Paper Size:	A1	Direction of View:	North			
	Date / Time:	30/07/2024, 10:36	Location:	E641315 N260539			

Sea Link Suffolk Onshore Scheme
Viewpoint 23: Church Road, Friston, looking north

Application Document 6.4.2.1.10-Z Representative Viewpoint Visualisations (sheet 4 of 4)



Sizewell C Input Zones

Zones 1A, 1A-6, 1G & 1N - 27m Height	Zone 1D - 14.6m Height
Zone 1A-1 - 50m Height	Zone 1E - 10.5m Height
Zone 1A-2 - 72m Height	Zones P1 & P6 - 55m Height
Zone 1A-3 - 57m Height	Zone P2 - 75m Height
Zones 1A-4, 1A-5, 1H, 1I & 1J - 29m Height	Zones P3, P4 & P5 - 59m Height
Zone 1A-7 - 38m Height	Zone P7 - 67m Height
Zone 1B - 6m Height	Zones S1 & S2 - 79m Height
Zones 1C & 1F - 18m Height	Zones S3, S4, S5 & S6 - 39m Height

Legend

- Order Limits
- Landscape and Visual Study Area
- Proposed Project Friston Substation - 18m Height
- Converter Station - 26m Height
- Fromus Bridge - 6m Height
- No 5m Digital Terrain Model Coverage
- Existing Building - 7.5m Height
- National Forest Inventory - Woodland - 10m Height

Representative Viewpoint

- Type 1
- Type 1 and Type 3

Zone of Theoretical Visibility

- Proposed project only
- Sizewell C only
- Proposed project & Sizewell C

Recreational Paths

- Sandlings Walk
- Suffolk Coast Path
- Suffolk Coastal Cycle Route
- Wolf Way Cycle Route

Public Rights of Way

- Footpath
- Bridleway
- Restricted Byway
- Byway Open to All Traffic

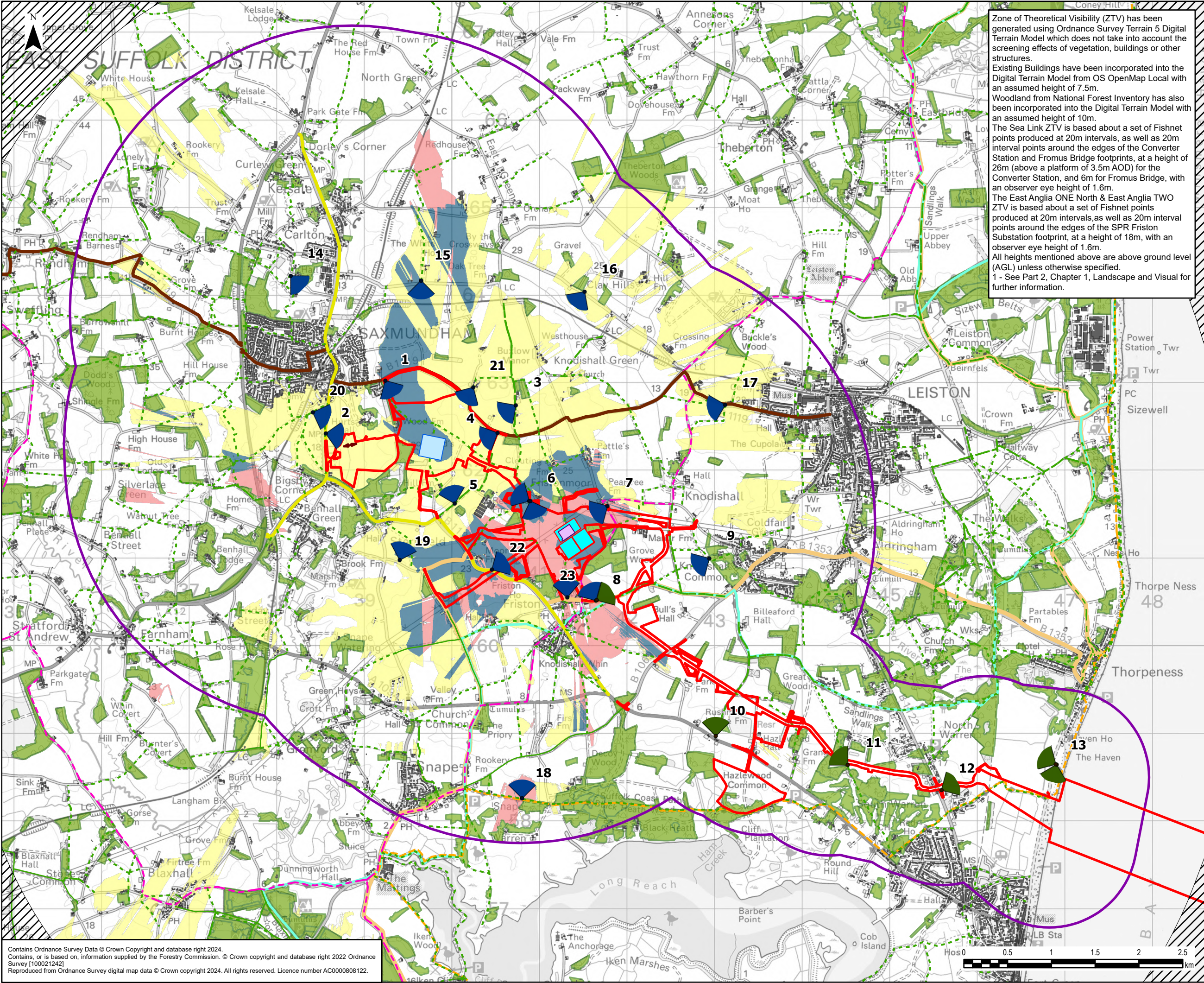
Road

- B1119
- B1121

Zone of Theoretical Visibility (ZTV) has been generated using Ordnance Survey Terrain 5 Digital Terrain Model which does not take into account the screening effects of vegetation, buildings or other structures. Existing Buildings have been incorporated into the Digital Terrain Model from OS OpenMap Local with an assumed height of 7.5m. Woodland from National Forest Inventory has also been incorporated into the Digital Terrain Model with an assumed height of 10m. The Sea Link ZTV is based about a set of Fishnet points produced at 20m intervals, as well as 20m interval points around the edges of the Converter Station and Fromus Bridge footprints, at a height of 26m (above a platform of 3.5m AOD) for the Converter Station, and 6m for Fromus Bridge, with an observer eye height of 1.6m. The Sizewell C ZTV is based about a set of Fishnet points produced at 20m intervals within the specified input features (see Legend for height details) with an observer eye height of 1.6m. All heights mentioned above are above ground level (AGL) unless otherwise specified. 1 - See Part 2, Chapter 1, Landscape and Visual for further information.

Contains Ordnance Survey Data © Crown Copyright and database right 2024. Contains, or is based on, information supplied by the Forestry Commission. © Crown copyright and database right 2022 Ordnance Survey [100021242] Reproduced from Ordnance Survey digital map data © Crown copyright 2024. All rights reserved. Licence number AC0000808122.

0	10/02/2025	ENVIRONMENTAL STATEMENT	EB	DF	CW
Rev	Date	Description	GIS	Chk	App
nationalgrid					
Scheme: SEA LINK					
Document Title: CUMULATIVE SCHEMES (MAJOR PROJECTS) SCREENED ZONE OF THEORETICAL VISIBILITY - SIZEWELL C					
Creator: EB	Date: 10/02/2025	Checker: DF	Date: 10/02/2025	Approver: CW	Date: 10/02/2025
Document Ref: FIGURE 6.4.2.1.11A	Scale: 1:40,000	Format: A3	Sheets: 1	Rev: 0	



Zone of Theoretical Visibility (ZTV) has been generated using Ordnance Survey Terrain 5 Digital Terrain Model which does not take into account the screening effects of vegetation, buildings or other structures. Existing Buildings have been incorporated into the Digital Terrain Model from OS OpenMap Local with an assumed height of 7.5m. Woodland from National Forest Inventory has also been incorporated into the Digital Terrain Model with an assumed height of 10m. The Sea Link ZTV is based about a set of Fishnet points produced at 20m intervals, as well as 20m interval points around the edges of the Converter Station and Fromus Bridge footprints, at a height of 26m (above a platform of 3.5m AOD) for the Converter Station, and 6m for Fromus Bridge, with an observer eye height of 1.6m. The East Anglia ONE North & East Anglia TWO ZTV is based about a set of Fishnet points produced at 20m intervals, as well as 20m interval points around the edges of the SPR Friston Substation footprint, at a height of 18m, with an observer eye height of 1.6m. All heights mentioned above are above ground level (AGL) unless otherwise specified. 1 - See Part 2, Chapter 1, Landscape and Visual for further information.

Legend

- Order Limits
- Landscape and Visual Study Area
- Proposed Project Friston Substation - 18m Height
- Converter Station - 26m Height
- Fromus Bridge - 6m Height
- East Anglia ONE North and East Anglia TWO - 18m Height
- No 5m Digital Terrain Model Coverage
- Existing Building - 7.5m Height
- National Forest Inventory - Woodland - 10m Height

Representative Viewpoint

- Type 1
- Type 1 and Type 3

Zone of Theoretical Visibility

- Proposed project only
- East Anglia ONE North / TWO only
- Proposed project & East Anglia ONE North / TWO

Recreational Paths

- Sandlings Walk
- Suffolk Coast Path
- Suffolk Coastal Cycle Route
- Wolf Way Cycle Route

Public Rights of Way

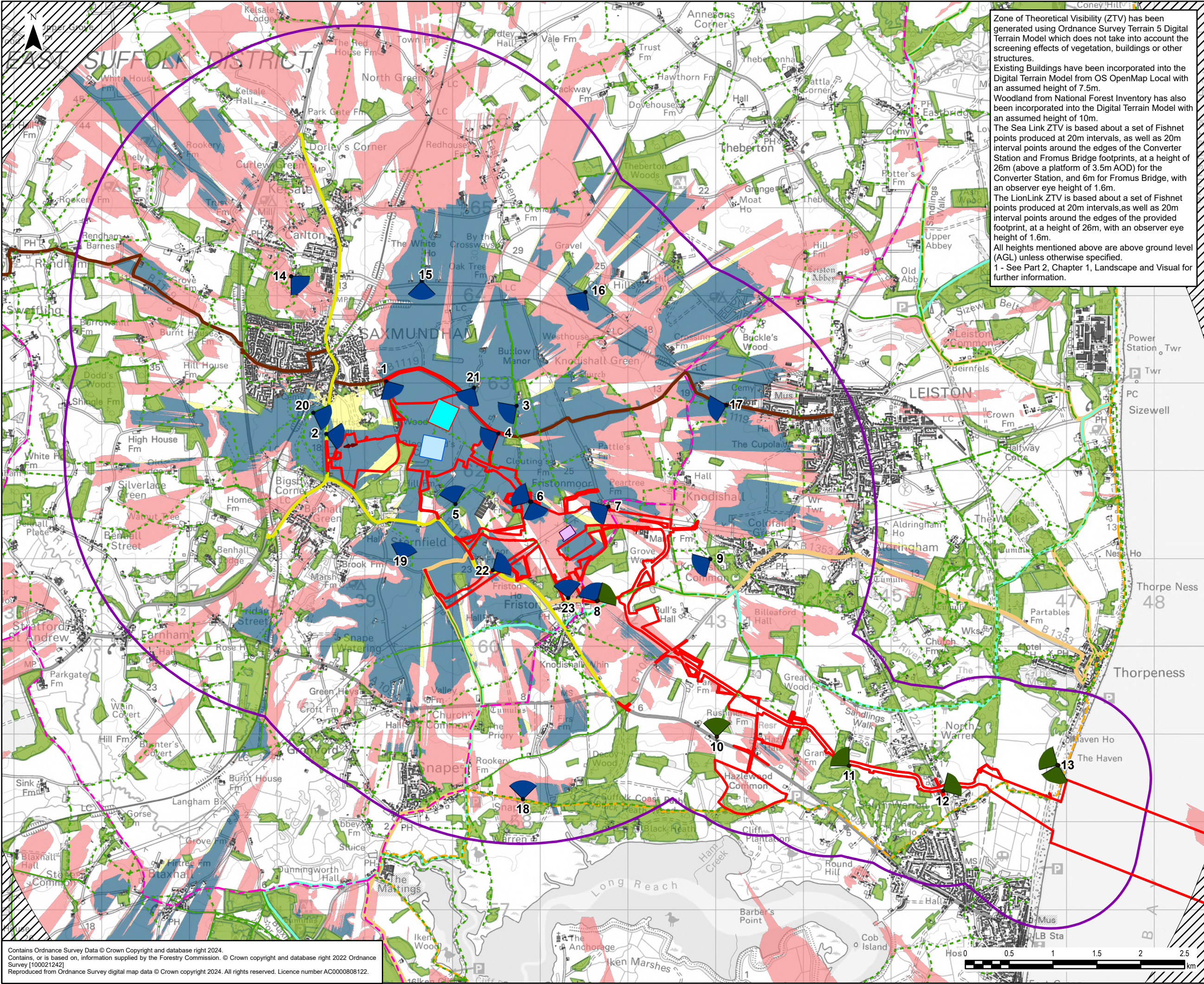
- Footpath
- Bridleway
- Restricted Byway
- Byway Open to All Traffic

Road

- B1119
- B1121

0	10/02/2025	ENVIRONMENTAL STATEMENT	EB	DF	CW
Rev	Date	Description	GIS	Chk	App
nationalgrid					
Scheme: SEA LINK					
Document Title: CUMULATIVE SCHEMES (MAJOR PROJECTS) SCREENED ZONE OF THEORETICAL VISIBILITY - EAST ANGLIA ONE NORTH AND EAST ANGLIA TWO OFFSHORE WIND FARMS					
Creator: EB	Date: 10/02/2025	Checker: DF	Date: 10/02/2025	Approver: CW	Date: 10/02/2025
Document Ref: FIGURE 6.4.2.1.11b	Scale: 1:40,000	Format: A3	Sheets: 1	Rev: 0	

Contains Ordnance Survey Data © Crown Copyright and database right 2024. Contains, or is based on, information supplied by the Forestry Commission. © Crown copyright and database right 2022 Ordnance Survey [100021242] Reproduced from Ordnance Survey digital map data © Crown copyright 2024. All rights reserved. Licence number AC0000808122.



Zone of Theoretical Visibility (ZTV) has been generated using Ordnance Survey Terrain 5 Digital Terrain Model which does not take into account the screening effects of vegetation, buildings or other structures. Existing Buildings have been incorporated into the Digital Terrain Model from OS OpenMap Local with an assumed height of 7.5m. Woodland from National Forest Inventory has also been incorporated into the Digital Terrain Model with an assumed height of 10m. The Sea Link ZTV is based about a set of Fishnet points produced at 20m intervals, as well as 20m interval points around the edges of the Converter Station and Fromus Bridge footprints, at a height of 26m (above a platform of 3.5m AOD) for the Converter Station, and 6m for Fromus Bridge, with an observer eye height of 1.6m. The LionLink ZTV is based about a set of Fishnet points produced at 20m intervals, as well as 20m interval points around the edges of the provided footprint, at a height of 26m, with an observer eye height of 1.6m. All heights mentioned above are above ground level (AGL) unless otherwise specified. 1 - See Part 2, Chapter 1, Landscape and Visual for further information.

Legend

Order Limits

Landscape and Visual Study Area

Proposed Project Friston Substation - 18m Height

Converter Station - 26m Height

Fromus Bridge - 6m Height

LionLink - 26m Height

No 5m Digital Terrain Model Coverage

Existing Building - 7.5m Height

National Forest Inventory - Woodland - 10m Height

Representative Viewpoint

Type 1

Type 1 and Type 3

Zone of Theoretical Visibility

Proposed project only

LionLink only

Proposed project & LionLink

Recreational Paths

Sandlings Walk

Suffolk Coast Path

Suffolk Coastal Cycle Route

Wolf Way Cycle Route

Public Rights of Way

Footpath

Bridleway

Restricted Byway

Byway Open to All Traffic

Road

B1119

B1121

0	10/02/2025	ENVIRONMENTAL STATEMENT	EB	DF	CW
Rev	Date	Description	GIS	Chk	App

nationalgrid

Scheme:

SEA LINK

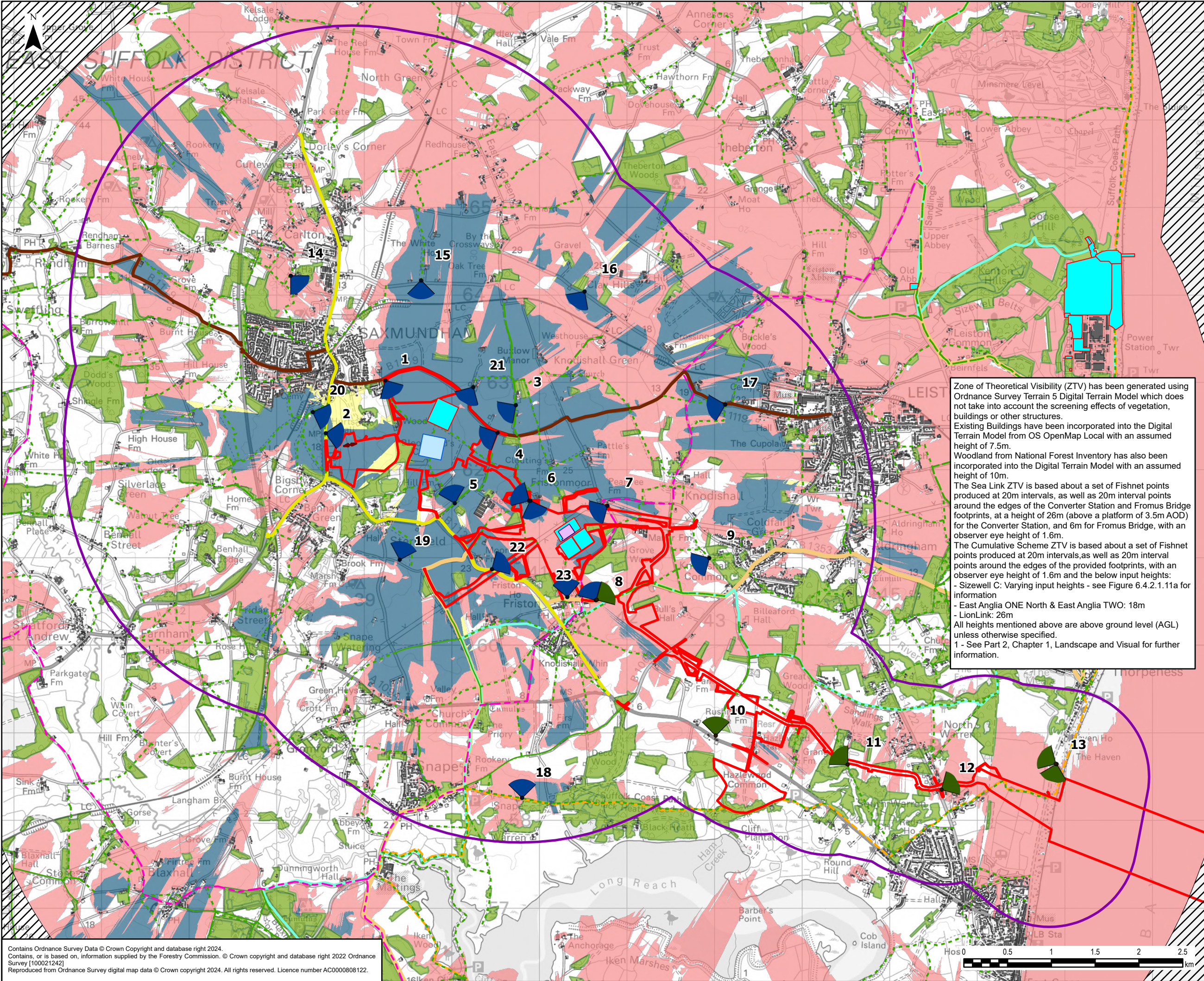
Document Title:

CUMULATIVE SCHEMES (MAJOR PROJECTS)
SCREENED ZONE OF THEORETICAL VISIBILITY -
LIONLINK OFFSHORE INTERCONNECTOR

Creater: <div>EB</div>	Date: <div>10/02/2025</div>	Checker: <div>DF</div>	Date: <div>10/02/2025</div>	Approver: <div>CW</div>	Date: <div>10/02/2025</div>
Document Ref: <div>FIGURE 6.4.2.1.11C</div>	Scale: <div>1:40,000</div>	Format: <div>A3</div>	Sheets: <div>1</div>	Rev: <div>0</div>	

Contains Ordnance Survey Data © Crown Copyright and database right 2024.
Contains, or is based on, information supplied by the Forestry Commission. © Crown copyright and database right 2022 Ordnance Survey [100021242]
Reproduced from Ordnance Survey digital map data © Crown copyright 2024. All rights reserved. Licence number AC0000808122.

Document Path: L:\Legacy\UKMCR1FP002-V1\IE\Proposal\3512\SEAL GIS\02_Maps\Environmental Statement\Landscape\Sea_Link_ES_Fig_6-4-2-1-11c_Cumulative_Schemes_Screened_ZTV_LionLink_20250210_EB.aprx



Legend

- Order Limits
- Landscape and Visual Study Area
- Proposed Project Friston Substation - 18m Height
- Converter Station - 26m Height
- Fromus Bridge - 6m Height
- Cumulative Scheme Footprints Varying Heights
- No 5m Digital Terrain Model Coverage
- Existing Building - 7.5m Height
- National Forest Inventory - Woodland - 10m Height

Representative Viewpoint

- Type 1
- Type 1 and Type 3

Zone of Theoretical Visibility

- Proposed project only
- Cumulative schemes only
- Proposed project & Cumulative schemes

Recreational Paths

- Sandlings Walk
- Suffolk Coast Path
- Suffolk Coastal Cycle Route
- Wolf Way Cycle Route

Public Rights of Way

- Footpath
- Bridleway
- Restricted Byway
- Byway Open to All Traffic

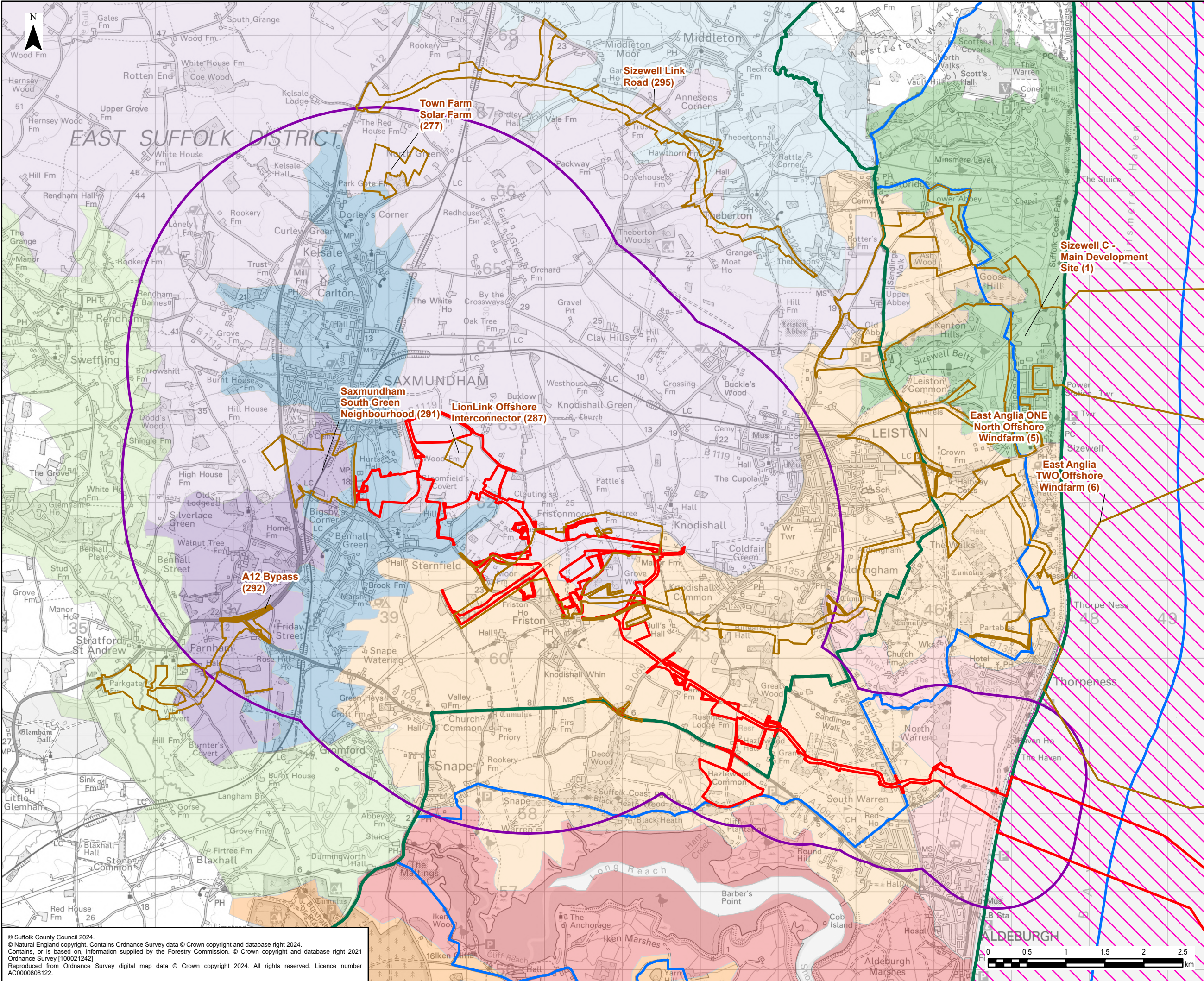
Road

- B1119
- B1121

Zone of Theoretical Visibility (ZTV) has been generated using Ordnance Survey Terrain 5 Digital Terrain Model which does not take into account the screening effects of vegetation, buildings or other structures. Existing Buildings have been incorporated into the Digital Terrain Model from OS OpenMap Local with an assumed height of 7.5m. Woodland from National Forest Inventory has also been incorporated into the Digital Terrain Model with an assumed height of 10m. The Sea Link ZTV is based about a set of Fishnet points produced at 20m intervals, as well as 20m interval points around the edges of the Converter Station and Fromus Bridge footprints, at a height of 26m (above a platform of 3.5m AOD) for the Converter Station, and 6m for Fromus Bridge, with an observer eye height of 1.6m. The Cumulative Scheme ZTV is based about a set of Fishnet points produced at 20m intervals, as well as 20m interval points around the edges of the provided footprints, with an observer eye height of 1.6m and the below input heights: - Sizewell C: Varying input heights - see Figure 6.4.2.1.11a for information - East Anglia ONE North & East Anglia TWO: 18m - LionLink: 26m All heights mentioned above are above ground level (AGL) unless otherwise specified. 1 - See Part 2, Chapter 1, Landscape and Visual for further information.

Contains Ordnance Survey Data © Crown Copyright and database right 2024. Contains, or is based on, information supplied by the Forestry Commission. © Crown copyright and database right 2022 Ordnance Survey [100021242] Reproduced from Ordnance Survey digital map data © Crown copyright 2024. All rights reserved. Licence number AC0000808122.

0	10/02/2025	ENVIRONMENTAL STATEMENT	EB	DF	CW
Rev	Date	Description	GIS	Chk	App
nationalgrid					
Scheme: SEA LINK					
Document Title: CUMULATIVE SCHEMES (MAJOR PROJECTS) SCREENED ZONE OF THEORETICAL VISIBILITY - ALL SCHEMES MERGED					
Creator: EB	Date: 10/02/2025	Checker: DF	Date: 10/02/2025	Approver: CW	Date: 10/02/2025
Document Ref: FIGURE 6.4.2.1.11D	Scale: 1:40,000	Format: A3	Sheets: 1	Rev: 0	



Legend

Order Limits

Landscape and Visual Study Area

Scoped-in Cumulative Schemes

Suffolk Coast and Heaths

Area of Outstanding Natural Beauty

Suffolk Heritage Coast (note this is defined rather than designated)

Suffolk Coastal Landscape Character Assessment

B3: Yox Valley

B4: Fromus Valley

B5: Alde Valley

D3: Minsmere and Sizewell Coast

D4: Thorpeness to Aldeburgh

J4: Alde Estuary

K3: Aldringham and Friston Sandlands

K4: Rendlesham and Tunstall Sandlands

L1: Heveningham and Knodishall Estate Claylands

O1: Benhall Estate Sandlands

Regional Seascape Character Types

SCT 03: Nearshore Waters

0	03/02/2025	ENVIRONMENTAL STATEMENT	EB	DF	CW
Rev	Date	Description	GIS	Chk	App

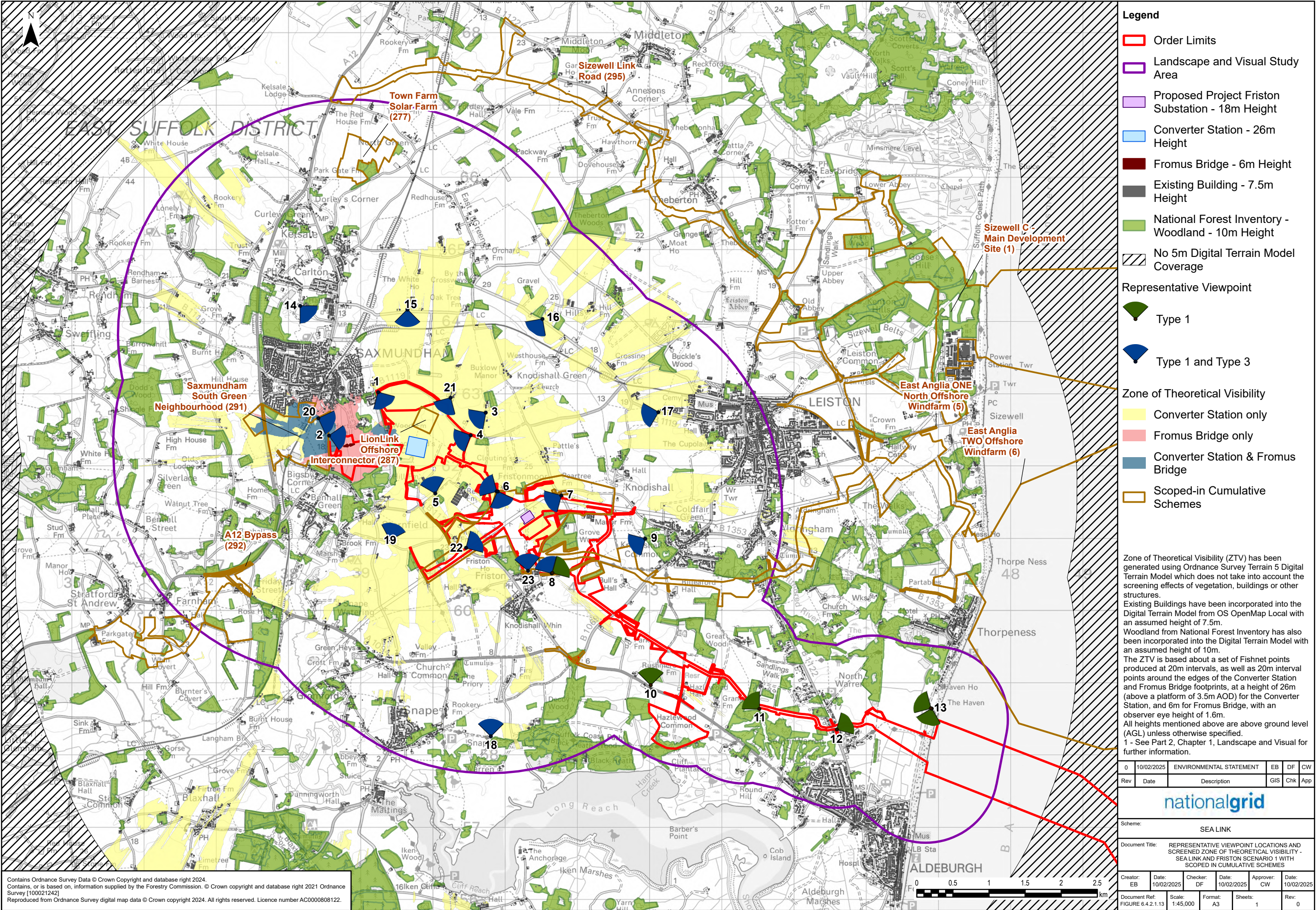
nationalgrid

Scheme: SEA LINK

Document Title: LANDSCAPE CONTEXT AND DESIGNATIONS AND LANDSCAPE CHARACTER – DISTRICT WITH SCOPED-IN CUMULATIVE SCHEMES

Creator: EB	Date: 03/02/2025	Checker: DF	Date: 03/02/2025	Approver: CW	Date: 03/02/2025
Document Ref: FIGURE 6.4.2.1.12	Scale: 1:45,000	Format: A3	Sheets: 1	Rev: 0	

© Suffolk County Council 2024.
© Natural England copyright. Contains Ordnance Survey data © Crown copyright and database right 2024.
Contains, or is based on, information supplied by the Forestry Commission. © Crown copyright and database right 2021
Ordnance Survey [100021242]
Reproduced from Ordnance Survey digital map data © Crown copyright 2024. All rights reserved. Licence number
AC0000808122.



National Grid plc
National Grid House,
Warwick Technology Park,
Gallows Hill, Warwick.
CV34 6DA United Kingdom

Registered in England and Wales
No. 4031152
nationalgrid.com